

# SINFONIA

Andante maestoso

*p* *maestoso*

*p*

Allegro

11 *ff*

*ff*

*ff*

Andante come prima

Andantino

15 1 *mf*

2 *mf*

**B**

Allegro

16 7

23

cresc. rinforz.

**C**

*ff*

**D**

15

*f*

**E**

*ff*

4

*ff*

3

4

*ff*

*ff*

**F**

*p* *cresc.* *rinforz.*

**G**

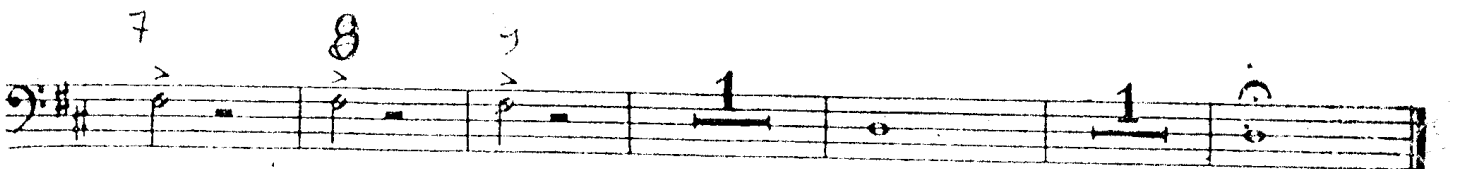
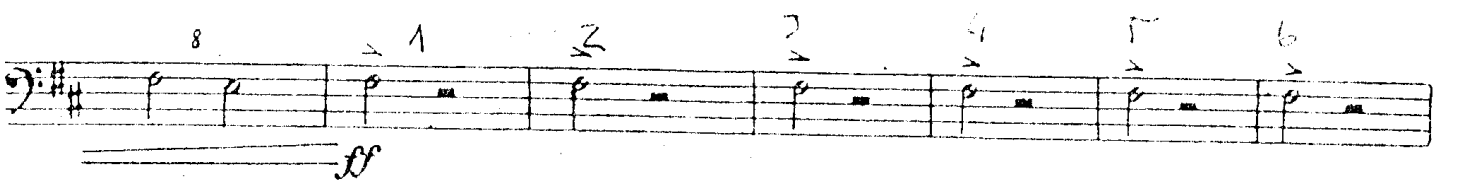
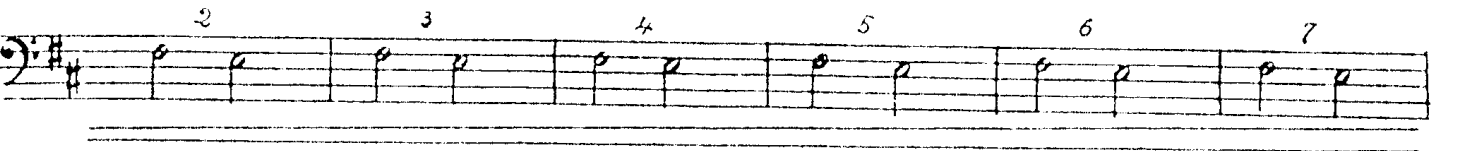
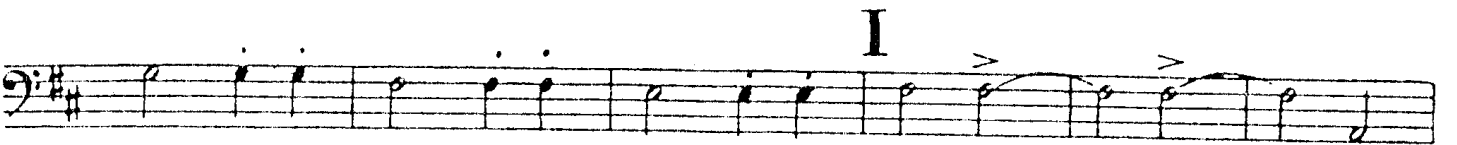
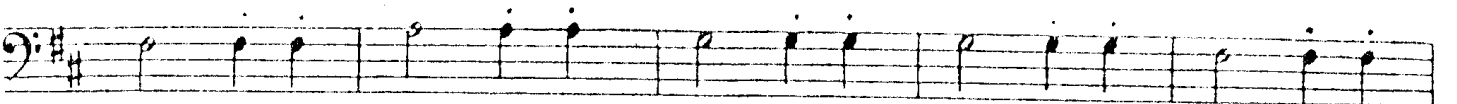
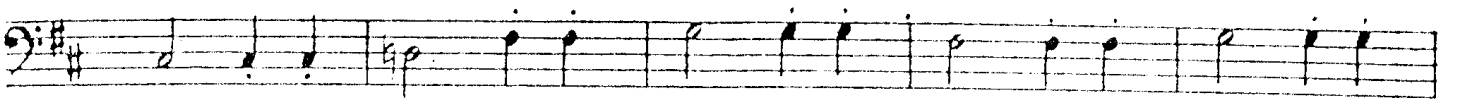
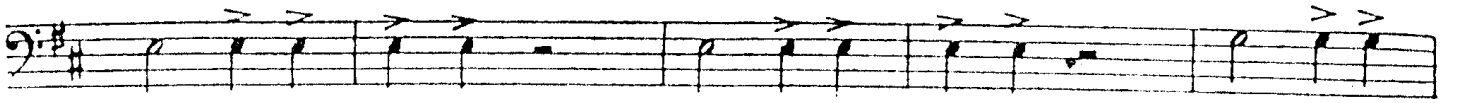
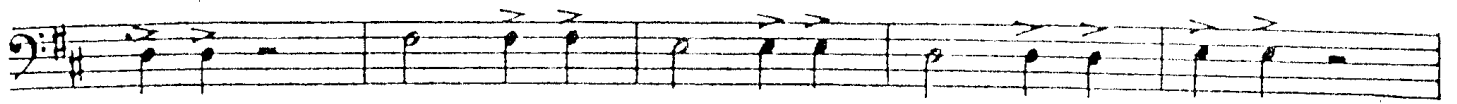
*f*

**H**

*f*

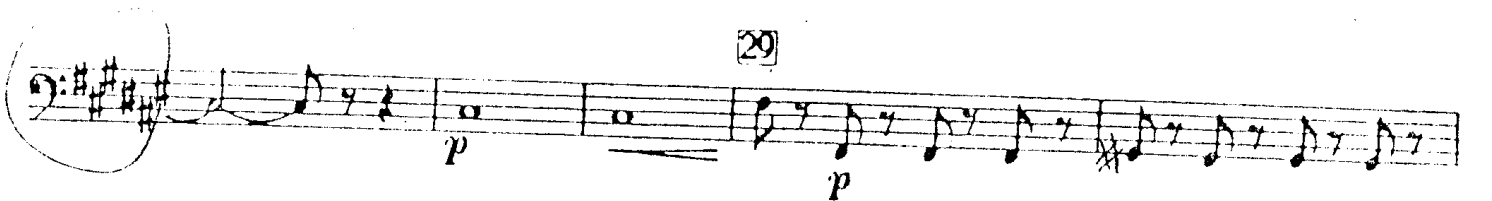
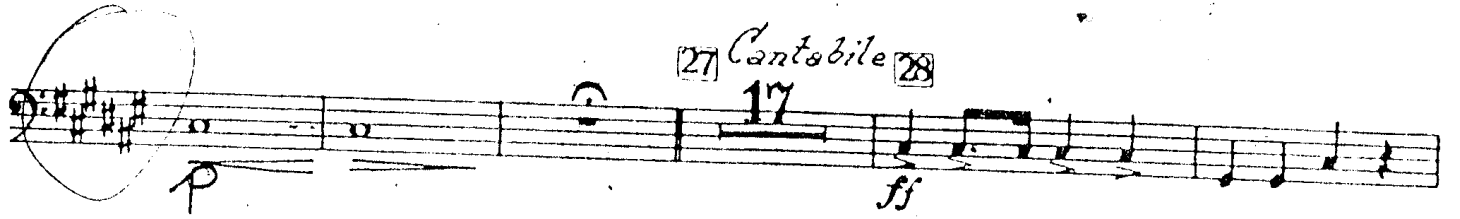
Più mosso

*ff*



Coro di schiavi Ebrei

Largo



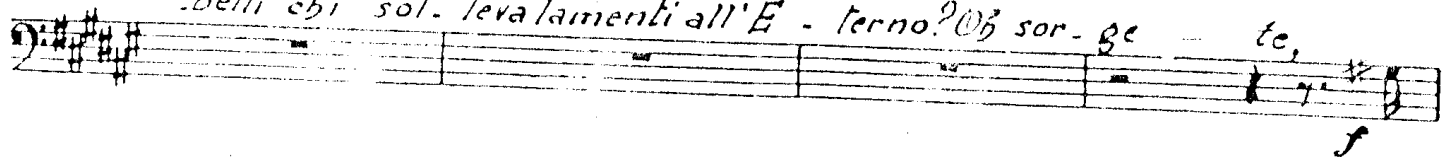
Profezia e Finale 3°

Recit.

oh chi piange? Di femmine im-

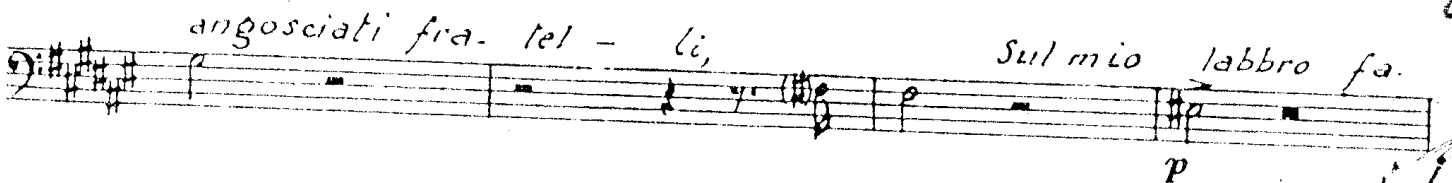


belli chi sol. leva lamenti all'E - terno? Oh sor - ge - te,



angosciati fra - tel - li,

Sul mio labbro fa -



-vella il Si - gnor!



V.S