

SINFONIA

Andante
maestoso

pmaestoso

ff

ff *p*

Allegro

Allegro **D. II**

p stacc. e sottovoce

ff

ff

pp *ff*

ff

ff

Andante come prima

Andantino

pp

A

1 *f* 2 *pp* *f*

B

5 *p* 7 *pp* Solo

1 *f*

Allegro *a 7*

pp

p

p

C

cresc. *rinforz.* *ff*

p

p

p

D

p

4 4 II

First staff of music in bass clef, key of D major. It begins with a piano (*p*) dynamic and a *cresc.* (crescendo) marking. The notation includes quarter notes, eighth notes, and a half note.

Second staff of music in bass clef, continuing the melodic line with various rhythmic values and ending with a forte (*f*) dynamic.

Third staff of music in bass clef, featuring a repeat sign and a half note.

Fourth staff of music in bass clef, marked with a boxed letter **E** and a forte (*ff*) dynamic. It contains a series of chords.

Fifth staff of music in bass clef, marked with a boxed letter **E**, a forte (*ff*) dynamic, and a 4-measure rest.

Sixth staff of music in bass clef, marked with a boxed letter **E**, a forte (*ff*) dynamic, and a 3-measure rest.

Seventh staff of music in bass clef, marked with a boxed letter **F** and a forte (*ff*) dynamic. It includes a 1-measure rest and a 18-measure rest.

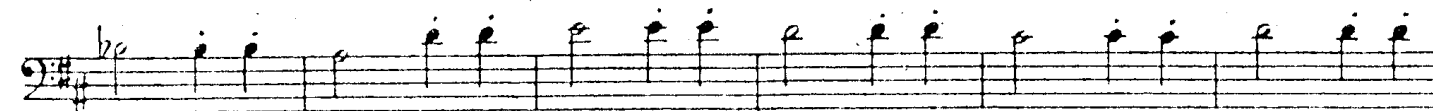
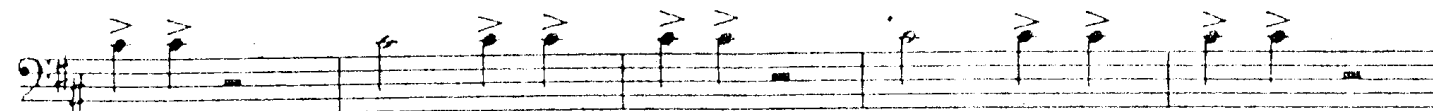
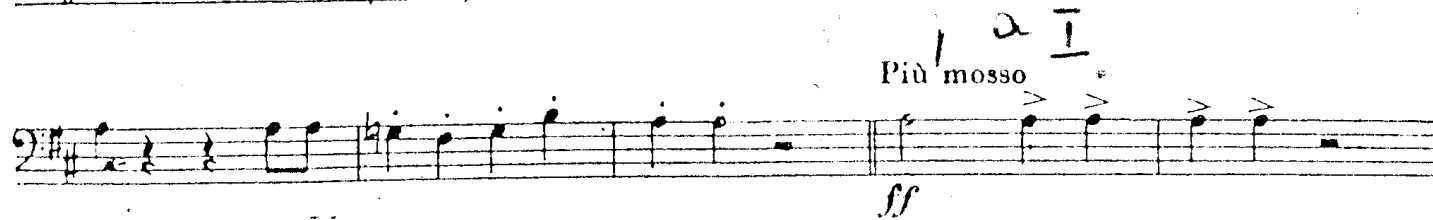
Eighth staff of music in bass clef, marked with a boxed letter **G**. Dynamics include piano (*p*), *cresc.*, *rinforz.*, and *ff*.

Ninth staff of music in bass clef, featuring a series of chords with accents.

Tenth staff of music in bass clef, featuring a series of chords with accents.

Eleventh staff of music in bass clef, featuring a series of chords with accents.

Twelfth staff of music in bass clef, marked with a boxed letter **H** and a piano (*p*) dynamic with *cresc.* marking. It includes a 7-measure rest.



25 *Allegro*
 Musical staff with notes and dynamics *mf*.

Musical staff with notes.

Musical staff with notes and lyrics "des per-dona".
 Dynamics: *mf* and *f*.

Musical staff with notes and slurs.

Musical staff with notes and dynamics *sf*.

Musical staff with notes and rests.

Missa

Coro di schiavi Ebrei

FINE DEL II ACT

38'

Largo
 Musical staff with notes and dynamics *sf*.

27 *Cantabile*
 Musical staff with notes and dynamics *sf*.

Musical staff with notes and dynamics *sf*.

pp pp p

p dim. pp

Profezia e finale

Recit.

oh chi piango? di femmine imbelli che sol-

-leva lamenti all'E-terno? Oh sor-ge-

angosciati fra-tel - li,

labbro fa - - vella il Si - gnor!

ff

Andante mosso

pp

mf